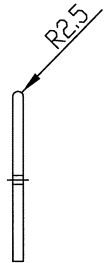
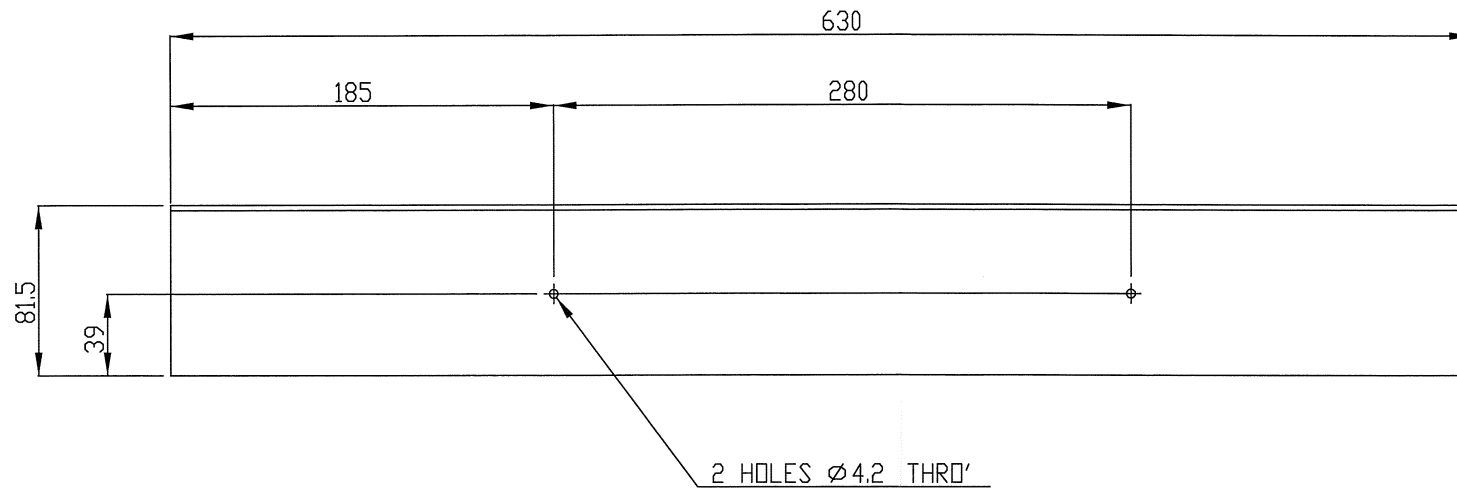


THIRD ANGLE PROJECTION

IF IN DOUBT ASK

ALL DIMENSIONS IN MM UNLESS OTHERWISE STATED

Ref	Qnt.	Revision	Date	Intr.	App.by
1		ORIGINAL	22-03-06	SAB	



CUT LENGTH = 1423mm

SURFACE AREA = 51345mm sq

- 3 -12- 2014
ARCHIV 0

N2 14/01324

NOTES:-

- REMOVE ALL BURRS & SHARP EDGES
- TOLERANCES UNLESS OTHERWISE STATED:-
LINEAR UP TO 1000 ± 0.5
OVER 1000 ± 1
ANGLES $\pm 0^{\circ}30'$

		PLATE - REAR		EN10025 S275J0	5 THK	STEEL PLATE	
Ref.no.	Qnt.	Part name		Material	Dimension	Remark	
Design by	Drawn by	Copied	Checked	Standard	Affirmed	Scale	Replace
MN	SAB					NTS	Replaced by
THIS DRAWING MUST NOT BE COPIED, REPRODUCED OR DISCLOSED TO ANY THIRD PARTY WITHOUT EXPRESS PERMISSION OF NIFTYLIFT LIMITED.		HR12 4x4		PLATE - REAR		File	Date
						P20018-06	P22-03-06
						Drawing no.	P20018-06